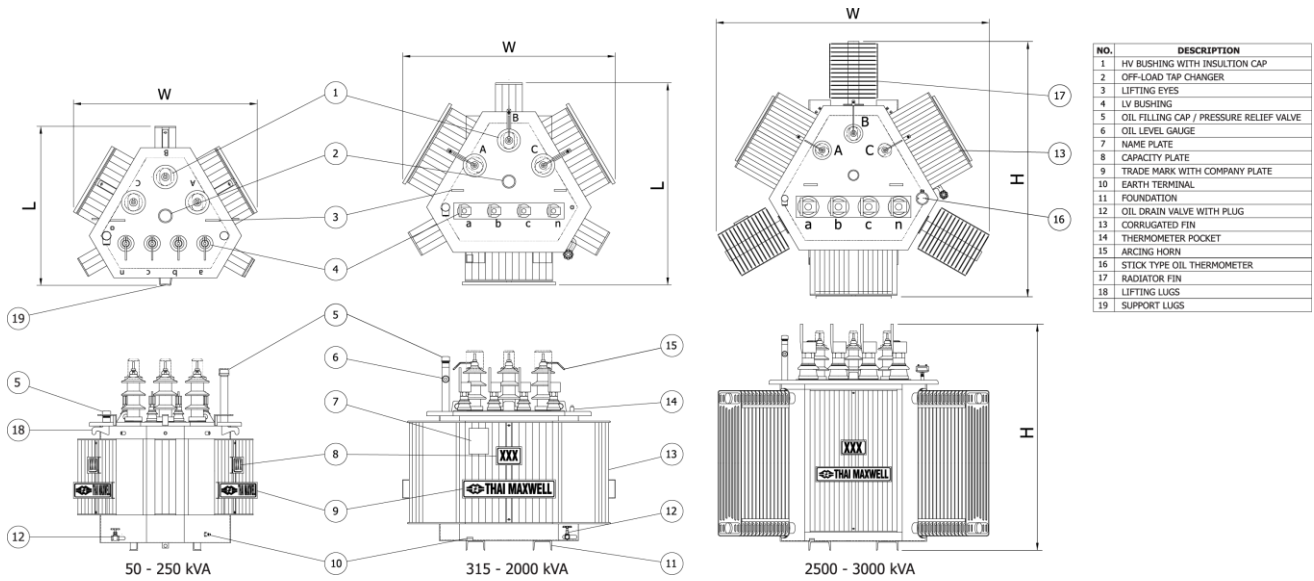


## TECHNICAL DATA OF STANDARD 3D DISTRIBUTION THREE PHASE TRANSFORMER



### Rated primary voltage : 22kV

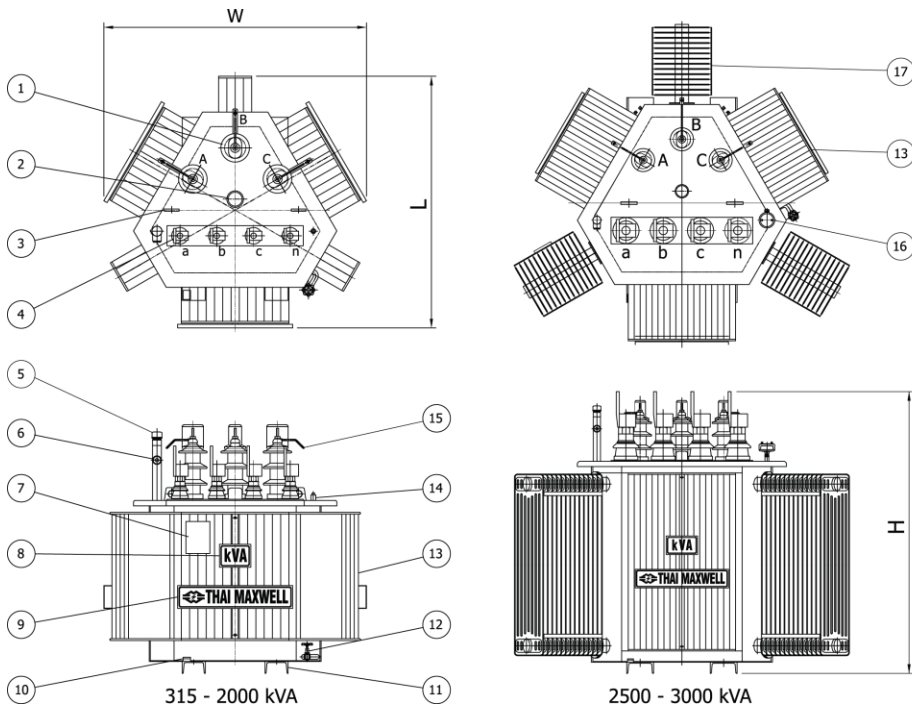
CAPACITY	NO-LOAD LOSSES	LOAD LOSSES AT 75 °C	TOTAL LOSSES AT 75 °C	IMPEDANCE AT 75 °C	EFFICIENCY (P.F.=1)		VOLTAGE REGULATION AT FULL LOAD (P.F.=1)	NOISE LEVEL dB (A) : 0.3 m	OUTLINE DIMENSION Approx.(mm.)			OIL QTY. (lt)	TOTAL WEIGHT Approx. (kg)
					1/2 Load (%)	Full Load (%)			W	L	H		
(kVA)	(Watt)	(Watt)	(Watt)	(%)			(%)						
50	160	950	1110	4.0	98.43	97.83	1.96	48	1005	810	1025	90	350
100	250	1550	1800	4.0	98.74	98.23	1.62	51	1006	865	1080	115	505
160	360	2100	2460	4.0	98.91	98.49	1.38	55	1120	925	1160	185	680
250	500	2950	3450	4.0	99.02	98.64	1.25	55	1160	980	1200	230	895
315	800	3900	4700	4.0	98.89	98.53	1.31	52	1270	1180	1220	235	1060
400	960	4600	5560	4.0	98.96	98.63	1.22	52	1325	1255	1250	280	1265
500	1150	5300	6450	4.0	99.02	98.73	1.13	52	1340	1275	1290	305	1415
630	1200	6500	7700	4.0	99.11	98.79	1.11	53	1370	1290	1370	345	1620
800	1250	9500	10750	6.0	99.10	98.67	1.36	54	1575	1540	1440	450	1995
1000	1500	11500	13000	6.0	99.13	98.72	1.32	55	1745	1730	1475	495	2310
1250	1650	13000	14650	6.0	99.22	98.84	1.21	57	1830	1840	1545	615	2815
1500	2050	15000	17050	6.0	99.23	98.88	1.18	57	1810	1830	1535	685	3185
1600	2350	19000	21350	6.0	99.12	98.68	1.36	58	1810	1815	1570	695	3280
2000	2600	20000	22600	6.0	99.25	98.88	1.18	58	1920	1945	1630	805	3830
2500	3000	25500	28500	7.0	99.26	98.87	1.26	60	2260	2160	1795	1030	4750
3000	3800	33000	36800	7.0	99.20	98.79	1.34	61	2620	2370	1900	1180	5510

#### Note :

1. The transformer is designed to operate under the following conditions
  - Altitude : Up to 1000 m above sea level
  - Ambient air temperature : 40 °C maximum
2. Limits of temperature rise (top oil) : not exceeding 60 °C  
 (winding) : not exceeding 65 °C
3. Insulation class : A(105 °C)
4. Connection symbol : Dyn 11
5. Reference standard : IEC 60076
6. Special vector group and other primary voltage available upon request

The contents and specifications of this datasheet are subject to change without prior notice. No part of this data may be reproduced without the prior approval of Thai Maxwell Electric.

**TECHNICAL DATA OF STANDARD 3D DISTRIBUTION THREE PHASE TRANSFORMER**



NO.	DESCRIPTION
1	HV BUSHING WITH INSULATION CAP
2	OFF-LOAD TAP CHANGER
3	LIFTING EYES FOR UNTANKING/TANKING ASSEMBLY
4	LV BUSHING
5	PRESSURE RELIEF VALVE
6	OIL LEVEL GAUGE
7	NAME PLATE
8	CAPACITY PLATE
9	TRADE MARK WITH COMPANY PLATE
10	EARTH TERMINAL
11	FOUNDATION
12	OIL DRAIN VALVE WITH PLUG
13	CORRUGATED FIN
14	THERMOMETER POCKET
15	ARCING HORN
16	STICK TYPE OIL THERMOMETER WITH CONTACT
17	RADIATOR FIN

**Rated primary voltage : 24kV**

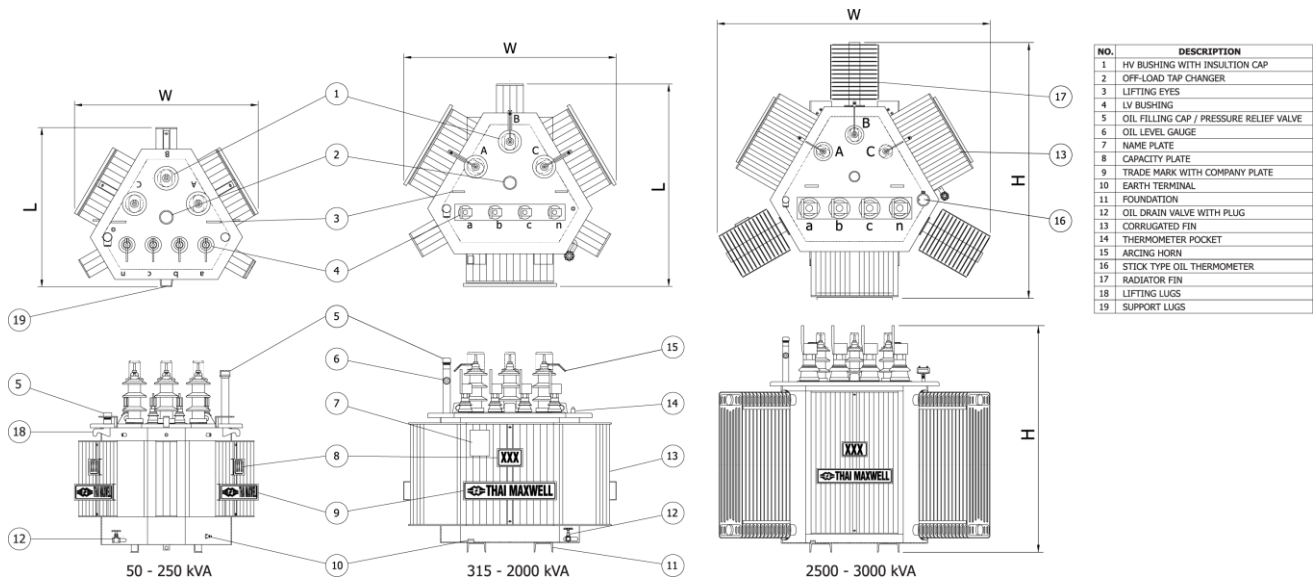
CAPACITY (kVA)	NO-LOAD LOSSES (Watt)	LOAD LOSSES AT 75 °C (Watt)	TOTAL LOSSES AT 75 °C (Watt)	IMPEDANCE AT 75 °C (%)	EFFICIENCY (P.F.=1)		VOLTAGE REGULATION AT FULL LOAD (P.F.=1) (%)	NOISE LEVEL dB (A) : 0.3 m	OUTLINE DIMENSION Approx.(mm.)			OIL QTY. (lt)	TOTAL WEIGHT Approx. (kg)
					½ Load (%)	Full Load (%)			W	L	H		
315	800	3900	4700	4.0	98.89	98.53	1.31	52	1185	1285	1300	280	1125
400	960	4600	5560	4.0	98.96	98.63	1.22	52	1250	1330	1325	335	1380
500	1050	5300	6350	4.0	99.06	98.75	1.13	52	1380	1440	1390	405	1685
630	1200	6300	7500	4.0	99.13	98.82	1.08	53	1385	1445	1480	455	1920
800	1250	9500	10750	6.0	99.10	98.67	1.36	54	1635	1655	1510	555	2285
1000	1500	11500	13000	6.0	99.13	98.72	1.32	55	1740	1740	1610	650	2680
1250	1650	13000	14650	6.0	99.22	98.84	1.21	57	1745	1745	1760	770	3135
1500	2050	15000	17050	6.0	99.23	98.88	1.18	57	1865	1845	1660	875	3740
1600	2350	19000	21350	6.0	99.12	98.68	1.36	58	1900	1865	1685	925	3935
2000	2600	20000	22600	6.0	99.25	98.88	1.18	58	1905	1880	1860	1110	4570
2500	3000	25500	28500	7.0	99.26	98.87	1.26	60	2130	2170	1910	1175	5415
3000	3800	33000	36800	7.0	99.20	98.79	1.34	61	2480	2780	1990	1380	6380

**Note :**

- The transformer is designed to operate under the following conditions
  - Altitude : Up to 1000 m above sea level
  - Ambient air temperature : 40 °C maximum
- Limits of temperature rise
  - (top oil) : not exceeding 60 °C
  - (winding) : not exceeding 65 °C
- Insulation class : A(105 °C)
- Connection symbol : Dyn 11
- Reference standard : IEC 60076
- Special vector group and other primary voltage available upon request

The contents and specifications of this datasheet are subject to change without prior notice. No part of this data may be reproduced without the prior approval of Thai Maxwell Electric.

## TECHNICAL DATA OF STANDARD 3D DISTRIBUTION THREE PHASE TRANSFORMER



### Rated primary voltage : 33kV

CAPACITY (kVA)	NO-LOAD LOSSES (Watt)	LOAD LOSSES AT 75 °C (Watt)	TOTAL LOSSES AT 75 °C (Watt)	IMPEDANCE AT 75 °C (%)	EFFICIENCY (P.F.=1)		VOLTAGE REGULATION AT FULL LOAD (P.F.=1) (%)	NOISE LEVEL dB (A) : 0.3 m	OUTLINE DIMENSION Approx.(mm.)			OIL QTY. (lt)	TOTAL WEIGHT Approx. (kg)
					½ Load (%)	Full Load (%)			W	L	H		
50	170	950	1120	4.0	98.40	97.81	1.96	48	840	1055	1260	135	395
100	260	1550	1810	4.0	98.72	98.22	1.62	51	915	1125	1330	185	635
160	370	2100	2470	4.0	98.89	98.48	1.38	55	955	1170	1400	225	830
250	520	2950	3470	4.0	99.00	98.63	1.25	55	1010	1185	1435	265	1065
315	850	3900	4750	4.0	98.85	98.51	1.31	52	1170	1265	1430	305	1155
400	1000	4600	5600	4.0	98.94	98.62	1.22	52	1300	1375	1410	340	1395
500	1200	5500	6700	4.0	98.98	98.68	1.17	52	1385	1445	1575	440	1765
630	1400	6500	7900	4.0	99.05	98.76	1.11	53	1470	1515	1530	450	1875
800	1450	10500	11950	6.0	98.99	98.53	1.48	54	1650	1675	1575	530	2185
1000	1650	12500	14150	6.0	99.05	98.60	1.42	55	1755	1755	1600	570	2470
1250	1900	14500	16400	6.0	99.12	98.70	1.33	57	1840	1830	1880	765	3150
1500	2100	18000	20100	6.0	99.13	98.68	1.37	57	1870	1840	1690	810	3510
2000	2700	22500	25200	6.0	99.17	98.76	1.30	58	1940	1910	2070	1095	4525
2500	3150	25500	28650	7.0	99.24	98.87	1.26	60	2335	2535	1875	1160	5270
3000	3900	33000	36900	7.0	99.20	98.78	1.34	61	2260	2355	2045	1545	6780

#### Note :

1. The transformer is designed to operate under the following conditions
  - Altitude : Up to 1000 m above sea level
  - Ambient air temperature : 40 °C maximum
2. Limits of temperature rise (top oil) : not exceeding 60 °C  
(winding) : not exceeding 65 °C
3. Insulation class : A(105 °C)
4. Connection symbol : Dyn 11
5. Reference standard : IEC 60076
6. Special vector group and other primary voltage available upon request

The contents and specifications of this datasheet are subject to change without prior notice. No part of this data may be reproduced without the prior approval of Thai Maxwell Electric.